

ECR UltraSynch™

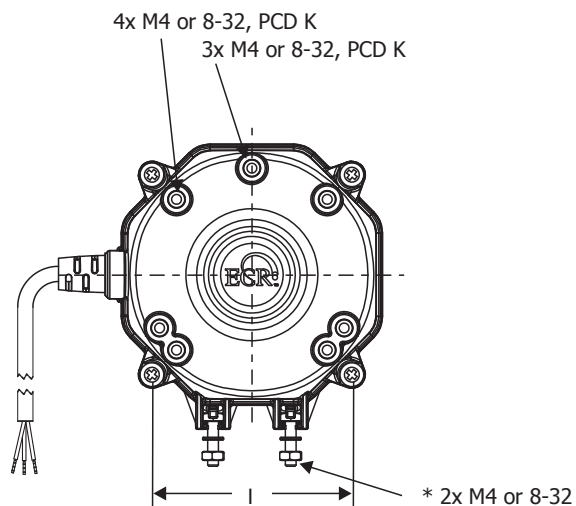
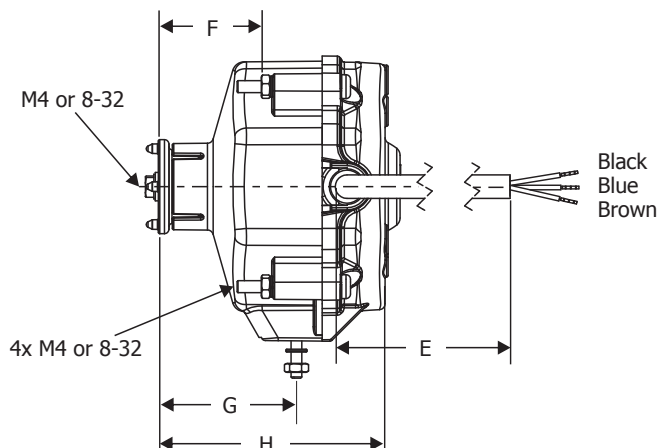
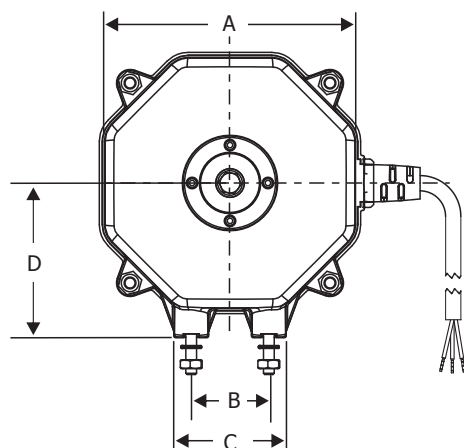
ECM Motor with Integrated Electronic Control



Motor	Voltage V / Hz	Current A	Speed RPM	Output Power W	Protection IP	Approval
ECR82PX**1	230 / 50	0.16	1500	12	55	CE, VDE, ATEX, CCC
ECR82P***1	230 / 50	0.16	1500	12	55	CE, VDE, CCC
ECR82P***2	230 / 60	0.19	1800	16	55	CE, VDE, UL, cUL
ECR92P***2	120 / 60	0.34	1800	16	55	UL, cUL

Product Specifications

Approvals	UL, CE, Ex, CCC
Speed	Precision fixed speed. Different airflow performance is achieved by selecting impellers of different size and pitch.
Unique Features	UltraSynch™ technology means that the motor speed remains absolutely constant regardless of power supply fluctuations.
Electronic Control Safety Features	If the motor fails to start or is forced outside the preset range, locked rotor/stall detection switches the motor to standby mode, with automatic restart after 40 seconds. This software detection protects the motor with a timed restart algorithm to limit maximum winding temperature. Self-resetting thermal protection stops the motor if over-temperature occurs. The motor restarts when the winding temperature is back within the operating range.
Moisture and Dust Protection	ECR UltraSynch™ motors are IP55. In all UltraSynch™ motors a conformal coating is applied to the electronic control board for complete moisture protection.
Operating Temperature	-30°C to +50°C (-22°F to +122°F).
Voltage Range	190V-254V 90V-140V
Direction of Rotation	Reversible. Direction of rotation can be either CCW SE (standard) or CW SE (upon request) as seen when facing the motor from Shaft End (SE). For CCW SE rotation, the black and blue wires are connected together. For CW SE rotation, the black wire is connected to the brown wire.
Weight	0.80 kg (1.76 lb)
Special Designs	Timed reverse: motor reverses direction of rotation during defrost and keeps condenser coils clean and more efficient. This reduces energy and service costs. Different power leads. For more special designs, please contact a Wellington office near you.



Dimensions	A	B	C	D	E	F	G	H	I	K
mm	88	26	38	52	500	34.5	46	77	67	71.4
inches	3.46	1.02	1.50	2.05	19.68	1.36	1.81	3.03	2.64	2.81

* 2x M4 or 8-32 threaded bolts are not included but available upon request.

K screws maximum depth is 6 mm (0.23 inches).

Black	Control lead
Blue	Neutral
Brown	Line / Phase