



### ECR ONE - ATEX

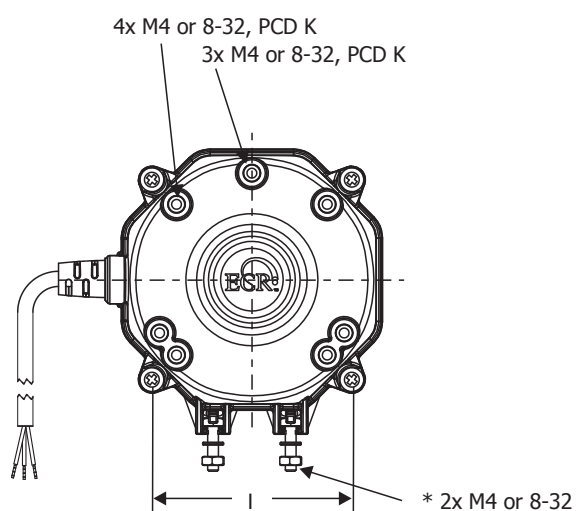
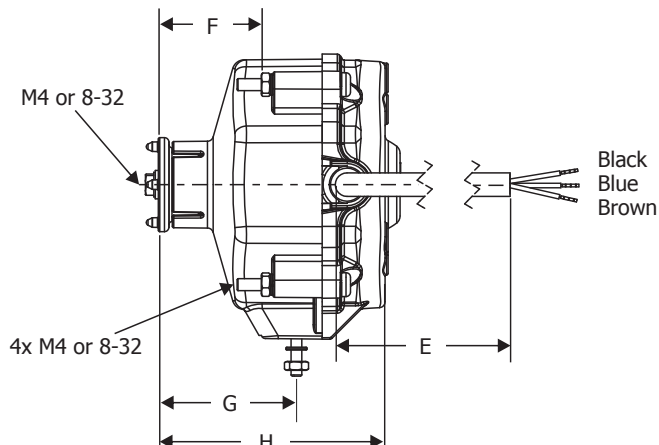
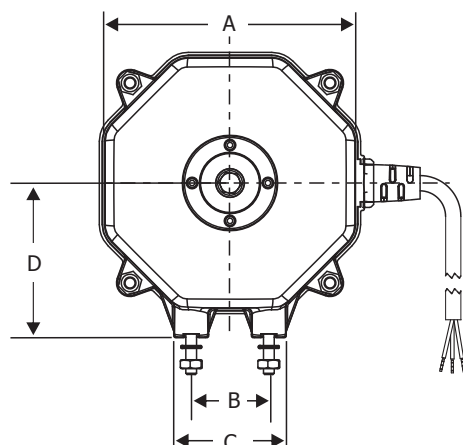
ECM Motor with Integrated Electronic Control



Motor	Voltage V / Hz	Current A	Speed RPM	Output Power W	Protection IP	Approval
ECR01BX**6	230 / 50-60	0.12	1300-1100	4-7	55	CE, VDE, ATEX
ECR01BX**4	230 / 50-60	0.14	1250	9	55	
ECR01BX**1	230 / 50-60	0.21	1300	12	55	
ECR01BX**2	230 / 50-60	0.25	1300	16	55	
ECR01BX**3	230 / 50-60	0.28	1500	20	55	
ECR01BX**5	230 / 50-60	0.30	2300	25	55	
ECR01AX**4	115 / 60	0.20	1250	7	55	CE, ATEX
ECR01AX**1	115 / 60	0.23	1500	9	55	
ECR01AX**2	115 / 60	0.31	1550	12	55	
ECR01AX**3	115 / 60	0.41	1550	16	55	
ECR01AX**5	115 / 60	0.53	2200	23	55	

### Product Specifications

Approvals	CE,  , 
Speed	Standard speed or user defined speed.
Electronic Control Safety Features	<p>If the motor fails to start, locked rotor/stall detection switches the motor to standby mode, with automatic restart after 60 seconds. This software detection protects the motor with a timed restart algorithm to limit maximum winding temperature.</p> <p>Self-resetting thermal protection stops the motor if over-temperature occurs. The motor restarts when the winding temperature is back within the operating range.</p>
Moisture and Dust Protection	ECR ONE motors are IP55. In all ECR ONE motors a conformal coating is applied to the electronic control board for complete moisture protection.
Operating Temperature	-30°C to +50°C (-22°F to +122°F).
Voltage Range	190V-254V 100V-127V
Direction of Rotation	Reversible. Direction of rotation can be either CCW SE (standard) or CW SE (upon request) as seen when facing the motor from Shaft End (SE). For CCW SE rotation, the black and blue wires are connected together. For CW SE rotation, the black wire is connected to the brown wire.
Weight	0.85 kg (1.87 lb)
Special Designs	<p>Timed reverse operation.</p> <p>Two speeds for day/night operation.</p> <p>Different power leads.</p> <p>For more special designs, please contact a Wellington office near you.</p>
Two Speed Operation	Two speed operation allows for switching from full speed to low speed, reducing energy consumption. Typically used when the compressor is not operational or when night mode is engaged.
Timed Reverse Operation	Motor reverses direction of rotation during defrost and keeps condenser coils clean and more efficient. This reduces energy and service costs.



Dimensions	A	B	C	D	E	F	G	H	I	K
mm	88	26	38	52	500	34.5	46	77	67	71.4
inches	3.46	1.02	1.50	2.05	19.68	1.36	1.81	3.03	2.64	2.81

\* 2x M4 or 8-32 threaded bolts are not included but available upon request.

K screws maximum depth is 6 mm (0.23 inches).

Black	Control lead
Blue	Neutral
Brown	Line / Phase